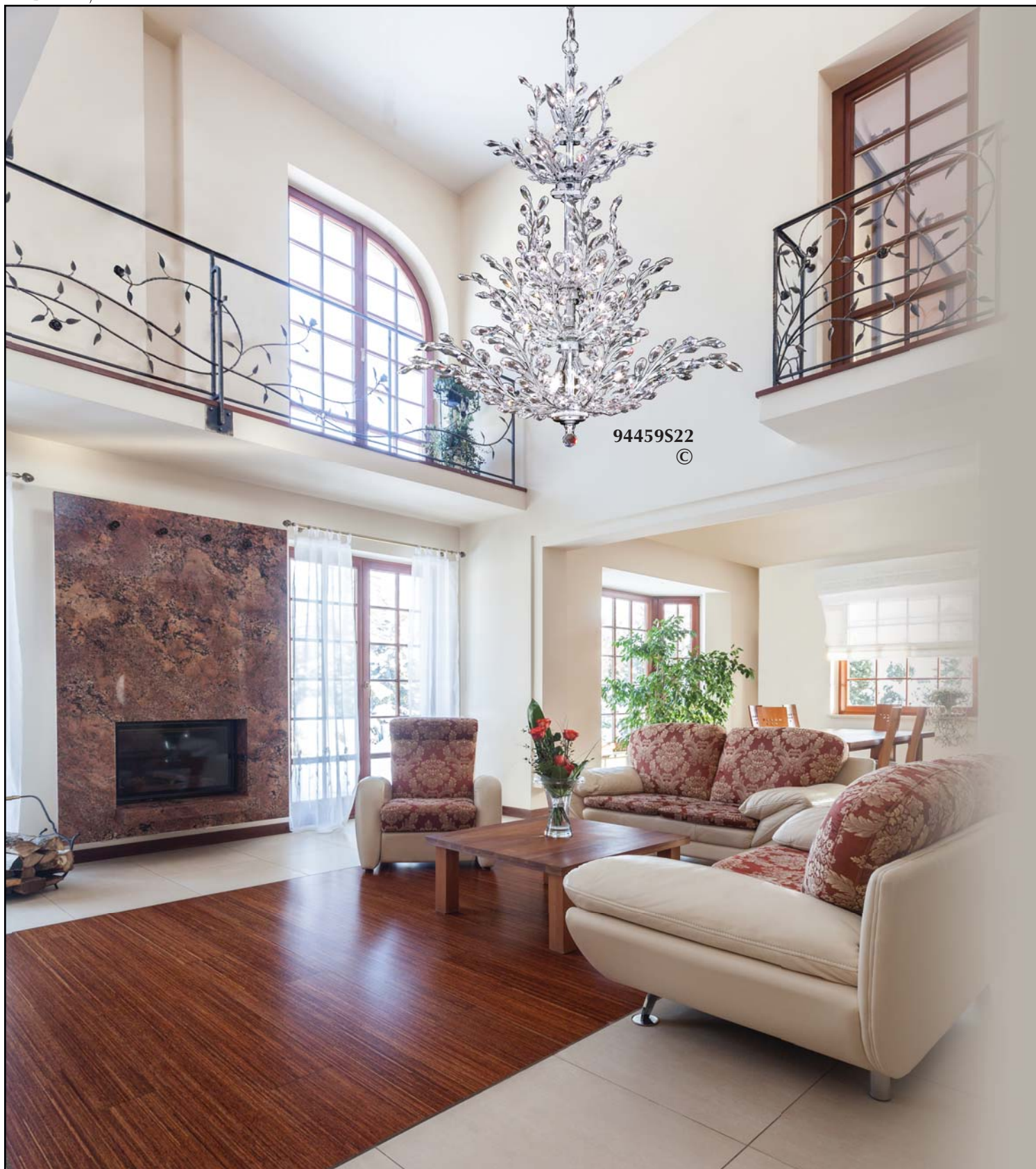


The "Florale" Collection



94459S22
©

© COPYRIGHT ALL WORLDWIDE
RIGHTS RESERVED BY

james r. moder®

*The Florale Collection
 in a room setting
 at a glance.*



The "Florale" Collection

You can almost feel a light breeze gently rustling these Crystal petals set into exquisitely delicate finished branches. The full Crystal trim sets the Florale collection apart from imitations!



95926S22 (Flush Adjustable)
Crystal: IMPERIAL™ (-22) (pictured),
Ø4 x 60w, ↔21"(53cm) x ↓ adj. from 14"(36cm)
to 60"(152cm)
Finish: Silver (S).



95928S22
Crystal: IMPERIAL™ (-22) (pictured),
Ø8 x 60w, ↔38" dia. (97cm) x ↓ adj.
from 18"(46cm) to 60"(152cm)
Finish: Silver (S).

© COPYRIGHT ALL WORLDWIDE
RIGHTS RESERVED BY

james r. moder®

← **95926S22**
 Crystal: IMPERIAL™ (-22) (pictured),
 Ø4 x 60w, ↔21"(53cm) x ↓ adj.
 from 14"(36cm) to 60"(152cm)
 Finish: Silver (S).

©

ADJUSTABLE Cable Length
 up to 60"(153cm).

©

(STRASS & ELEMENTS are now named Swarovski® crystals)

Also available in:

Swarovski crystals (-00)

SPECTRA® CRYSTAL (-11) by Swarovski

© Copyright 2015 James R. Moder®

Swarovski crystals, SPECTRA CRYSTAL, STRASS are registered trademarks of Swarovski AG.

95927S22
 Crystal: IMPERIAL™ (-22) (pictured),
 Ø5 x 60w, ↔27"(69cm) x ↓ adj.
 from 18"(46cm) to 60"(152cm)
 Finish: Silver (S).



james r. moder® Crystal Chandeliers
are designed and manufactured to the highest
quality standards, engineered for best value
and are distributed around the world.

james r. moder®
moder IMPACT™
Crystal Chandelier
Fashion

*"A lavishly fully
trimmed collection"*



94459S22

Crystal: IMPERIAL™ (-22) (pictured),
Ø 26 x 40w, ↔ 38" (97cm) x † 51" (130cm)
Finish: Silver (S) or Royal Gold (G).

© COPYRIGHT ALL WORLDWIDE
RIGHTS RESERVED BY

james r. moder®



(STRASS & ELEMENTS are now named Swarovski[®] crystals)

Also available in:

Swarovski crystals (-00)

SPECTRA[®] CRYSTAL (-11) by Swarovski

© Copyright 2015 James R. Moder[®]

Swarovski crystals, SPECTRA CRYSTAL, STRASS are registered trademarks of Swarovski AG.

94458S22
Crystal: IMPERIAL[™] (-22) (pictured),
Ø 18 x 60w, ↔ 38" (97cm) x ↓ 34" (86cm)
Finish: Silver (S) or Royal Gold (G).



We are a Leading International Manufacturer!

To obtain the highest quality, consistency and value in our Crystal Chandelier production, we manufacture our product in our own factory and distribute in over 46 countries around the world!



A simple and easy trimming method has been developed for this new style. As you can see, nothing is easier for shipping & assembly, and it's a breeze to clean.

94457S22

Crystal: IMPERIAL™ (-22) (pictured),
Ø 13 x 60w, ↔ 27" (69cm) x ↓ 27" (69cm)
Finish: Silver (S) or Royal Gold (G).

© COPYRIGHT ALL WORLDWIDE
RIGHTS RESERVED BY

james r. moder®



*Green, Amber &
Clear Crystal*

Available in
Multiple Colors on a
semi custom basis!



Golden Teak Crystal

(STRASS & ELEMENTS are now named Swarovski[®] crystals)

Also available in:

Swarovski crystals (-00)

SPECTRA[®] CRYSTAL (-11) by Swarovski

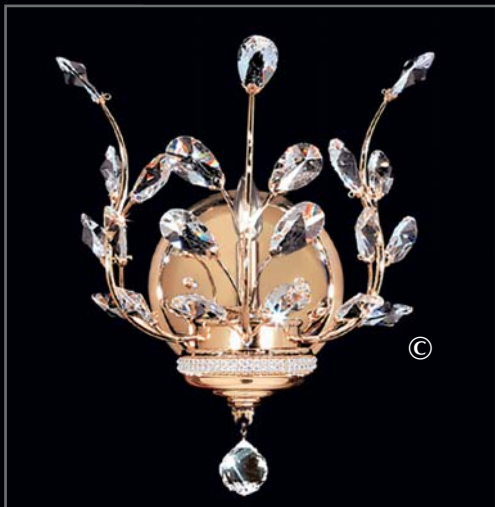
© Copyright 2015 James R. Moder[®]

Swarovski crystals, SPECTRA CRYSTAL, STRASS are registered trademarks of Swarovski AG.

94457S2GT
Crystal: IMPERIAL[™] Golden Teak (-2GT) (pictured),
Ø 13 x 60w, ↔27" (69cm) x ↓27" (69cm)
Finish: Silver (S) or Royal Gold (G).



94456S22
 Crystal: IMPERIAL™ (-22) (pictured),
 Ø 8 x 60w, ↔ 21" (53cm) x ↓ 22" (56cm)
 Finish: Silver (S) or Royal Gold (G).



94451G22 (Wall Sconce)
 Crystal: IMPERIAL™ (-22) (pictured),
 Ø 1 x 60w, ↔ 10" (25cm) x ↓ 14" (36cm) x 8" (20cm) Ext.
 Finish: Royal Gold (G) or Silver (S).

© COPYRIGHT ALL WORLDWIDE
 RIGHTS RESERVED BY

james r. moder®



94455G22

Crystal: IMPERIAL™ (-22) (pictured),
Ø 14 x 60w, ↔ 27" (69cm) x ↓ 12" (30cm)
Finish: Royal Gold (G) or Silver (S).



94454S22

Crystal: IMPERIAL™ (-22) (pictured),
Ø 4 x 60w, ↔ 21" (53cm) x ↓ 13" (33cm)
Finish: Silver (S) or Royal Gold (G).

(STRASS & ELEMENTS are now named Swarovski® crystals)

Also available in:

Swarovski crystals (-00)

SPECTRA® CRYSTAL (-11) by Swarovski

© Copyright 2015 James R. Moder®

Swarovski crystals, SPECTRA CRYSTAL, STRASS are registered trademarks of Swarovski AG.