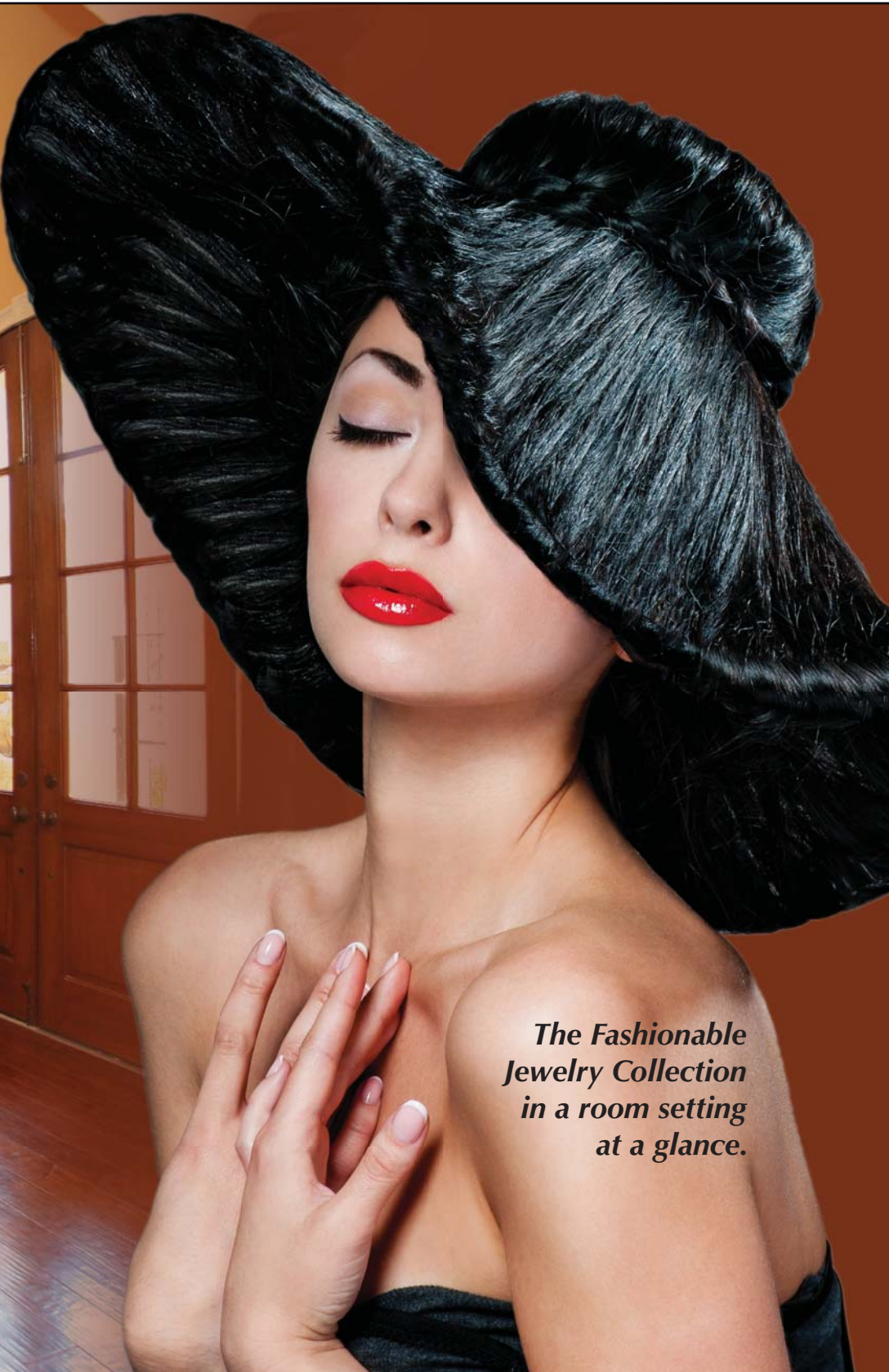


The "Fashionable Jewelry" Collection



© COPYRIGHT ALL WORLDWIDE
RIGHTS RESERVED BY

james r. moder®



*The Fashionable
Jewelry Collection
in a room setting
at a glance.*



The "Fashionable Jewelry" Collection

As the name implies, this beautifully designed combination of Crystal and Silver finish is inspired by the appearance and appeal of diamond encrusted jewelry.



96042S22 (Wall Sconce)
Crystal: IMPERIAL™ (-22) (pictured),
□ 2 (G9) x 50w, ↔ 14"(36cm) x
‡ 17(43cm) x 7"(18cm) Ext.
Finish: Silver (S).

96050S22

Crystal: IMPERIAL™ (-22) (pictured),
□ 10+5 (G9) x 50w, ↔ 32"(82cm) x ‡ 36"(91cm)
Finish: Silver (S).

© COPYRIGHT ALL WORLDWIDE
RIGHTS RESERVED BY

james r. moder®



96041S22 ©

96041S22

Crystal: IMPERIAL™ (-22) (pictured),
 ⌀1 (G9) x 35w, ↔4" (10cm) x
 ↓7" (18cm)
 Finish: Silver (S).

james r. moder
 moder.IMPACT™
 Crystal Chandelier
Fashion



©

96048S22

Crystal: IMPERIAL™ (-22) (pictured),
 ⌀6+3 (G9) x 50w, ↔24" (62cm) x ↓30" (75cm)
 Finish: Silver (S).

(STRASS & ELEMENTS are now named Swarovski® crystals)

Also available on a custom basis in:
 Swarovski crystals (-00)
 SPECTRA® CRYSTAL (-11) by Swarovski

© Copyright 2015 James R. Moder®
 Swarovski crystals, SPECTRA CRYSTAL, STRASS are registered trademarks of Swarovski AG.